

INSTALLATION NOTES:

1. OUTSIDE METER SETTINGS MAY BE REQUIRED BY AUTHORITY RULES.
2. SHUT OFF VALVE INSTALLED BEFORE PRESSURE REGULATOR - TO ENGAGE PRESSURE REGULATOR TO BE CLEANED.
3. PRESSURE REGULATOR REQUIRED (STATIC PRESSURE APPROXIMATELY 165 P.S.I.) (FLARED FOR 1-1/4" AND LARGER).
4. NO SOLDER JOINTS BEFORE THE WATER METER, USE ONLY COMPRESSION FITTINGS (FLARED FOR 1-1/4" AND LARGER).
5. WELL SUPPLY MUST BE PHYSICALLY DISCONNECTED OR SEPARATED FROM THE PLUMBING SYSTEM BEFORE THE WATER METER IS INSTALLED.
6. A CLOSED SYSTEM IS CREATED WITH A BACKFLOW PREVENTER IN PLACE. PROVISIONS MUST BE MADE FOR THERMAL EXPANSION.
7. REDUCED PRESSURE ZONE BACKFLOW PREVENTERS CAN ONLY BE PLACED IN LOCATIONS WHERE A VERY RELIABLE DRAINAGE SYSTEM IS PRESENT.
8. FLOOR DRAIN SHOULD BE LOCATED NEAR BACKFLOW PREVENTER IN CASE OF DISCHARGES.

MATERIALS

UNDERGROUND SERVICE LINE

FOR 1" AND SMALLER USE TYPE K SOFT COPPER TUBING w/ COMPRESSION FITTINGS. FOR 1-1/4" AND LARGER USE TYPE K SOFT COPPER TUBING w/ FLARED CONNECTIONS.

BALL VALVE - BRONZE BALL VALVE

BALL VALVE w/ DRAIN - BALL AND WASTE FULL PORT BRONZE BALL VALVE, WATTS No. B-5300 OR EQUIV.

BACKFLOW PREVENTER

CONTACT THE AUTHORITY REGARDING WHICH STYLE OF BACKFLOW PREVENTER (DUAL CHECK, OR REDUCED PRESSURE) WILL BE REQUIRED. REGARDLESS OF WHICH STYLE IS REQUIRED, ALL BACKFLOW PREVENTERS WILL BE FURNISHED AS A COMPLETE UNIT, FROM A SINGLE MANUFACTURER, COMPLETE WITH TWO ISOLATION VALVES, BALL TYPE TEST COCKS, AND A STRAINER.

DUAL CHECK STYLE - WATTS SERIES 709 OR EQUIVALENT.
REDUCED PRESSURE ZONE STYLE - WATTS 909 OR EQUIVALENT.

REGULATOR - BRONZE BODY PRESSURE REGULATOR w/ STRAINER, WATTS No. US OR EQUIV.

EXPANSION TANK - HOT WATER HEATING SYSTEM EXPANSION TANK, (WATTS SERIES ET OR EQUIV. IS RECOMMENDED).

METER - RESIDENTIAL METER UP TO 3/4" IS FURNISHED BY THE AUTHORITY.

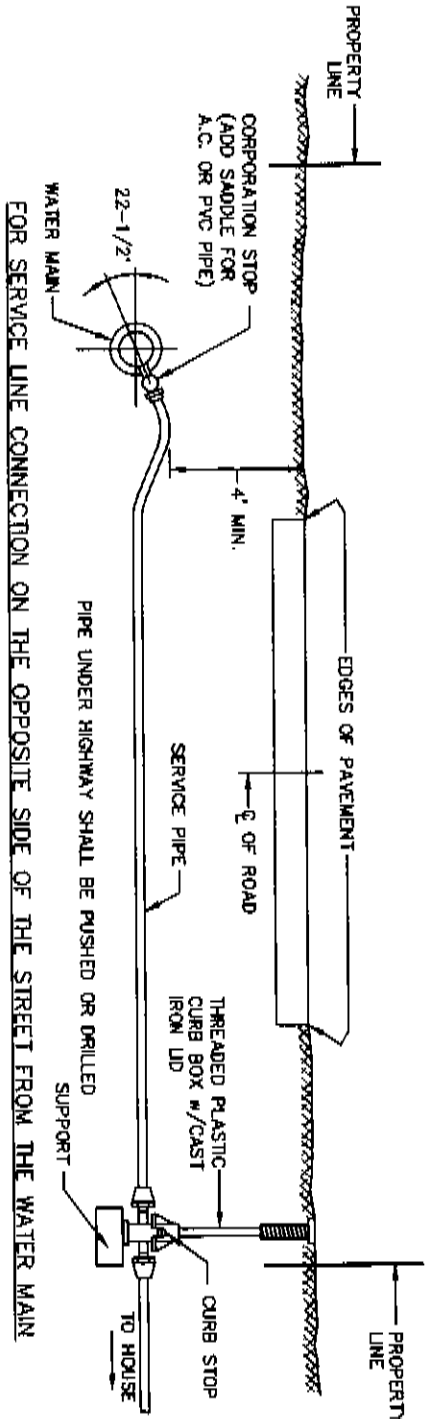
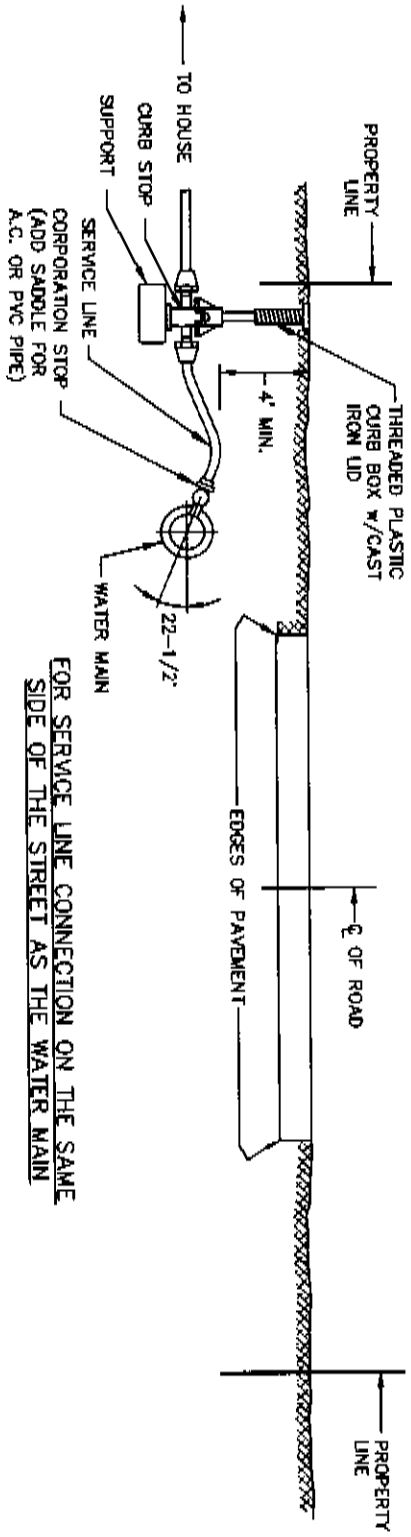
**THE MUNICIPAL AUTHORITY OF THE
TOWNSHIP OF WASHINGTON**

PERMIT/VALVE

PERMIT COUNTY

TYPICAL 3/4" THROUGH 2" SERVICE LINE AND
METER/BACKFLOW PREVENTER INSTALLATION

BE	SCALE	DATE	DRAWN BY	CHECKED BY
	BANKSON ENGINEERS, INC.	NOV 14 2012	D.M.K.	D.M.K.
CONSULTING ENGINEERS		DESIGNED BY		OVERSEEN WORK
APPROX. W. 118th		2-514-37-1		D.M.K.
SEPT. 2012		D.M.K.		D.M.K.



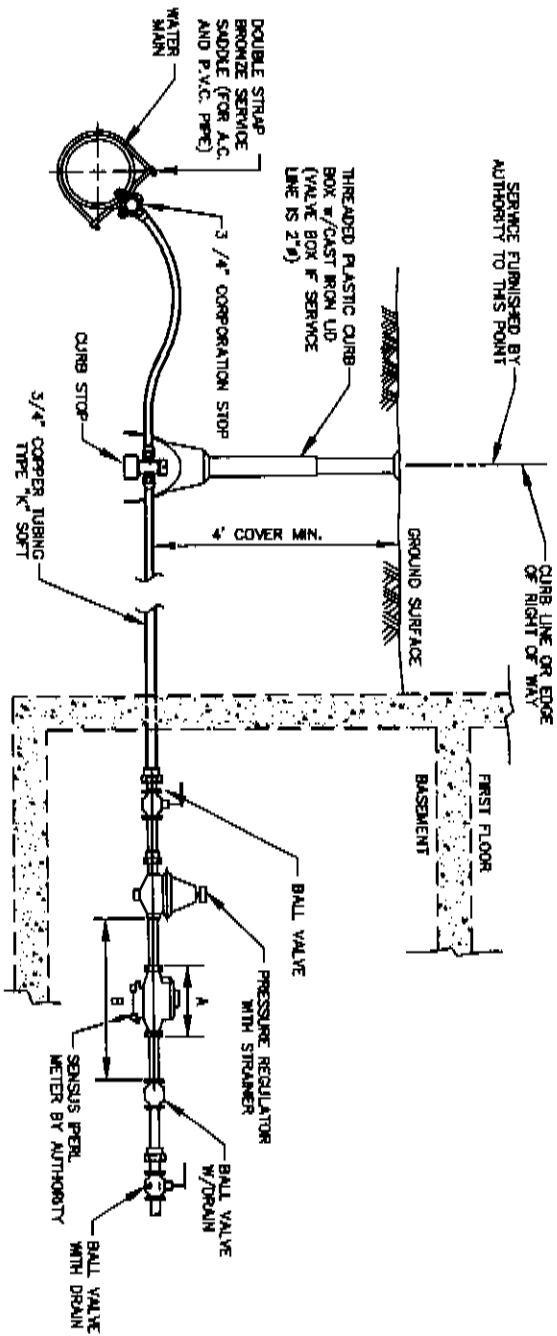
TYPICAL SERVICE LINE CONNECTION

THE MUNICIPAL AUTHORITY OF THE
TOWNSHIP OF WASHINGTON
PENNSYLVANIA

	SCALE	DRAWN BY	SHEETS IN SET
	NONE	D.A.S.	1
DATE	APPROVED BY	DRAWING NUMBER	
SEPT. 2012	O.P.K.	E-514-08-1	

BANKSTON ENGINEERS, INC.
CONSULTING ENGINEERS
BETHLEHEM, PA. 18001

METER SIZE	A	B
5/8" x 3/4"	7 1/2"	12 1/2"
1"	10 3/4"	16 1/4"
1 1/2"	12 5/8"	23 3/4"
2"	16 1/4"	18 1/4"
3"	17"	17"



INSTALLATION NOTES:

1. DIMENSION "B" INCLUDES METER COUPLINGS OR FLANGES.
2. 3/4" CHECK VALVE, BRASS, IRON PIPE THREADS.
3. SHUT-OFF VALVE INSTALLED BEFORE PRESSURE REGULATOR - TO ENABLE PRESSURE REGULATOR TO BE CLEANED.
4. PRESSURE REGULATOR INSTALLED BEFORE WATER METER - WITH NO MORE THAN 75 PSI MAXIMUM.
5. REMOTE READOUT, IF INSTALLED, SHALL BE MOUNTED AT AN UNOBSTRUCTED LOCATION AND AT EYE LEVEL.
6. NO SWEAT JOINTS BEFORE THE WATER METER.
7. WELL SUPPLY MUST BE PHYSICALLY DISCONNECTED OR SEPARATED FROM THE PLUMBING SYSTEM BEFORE THE WATER METER IS INSTALLED.

**NOTE: DOMESTIC METER
FURNISHED AND INSTALLED
BY THE AUTHORITY**

**THE MUNICIPAL AUTHORITY OF THE
TOWNSHIP OF WASHINGTON**

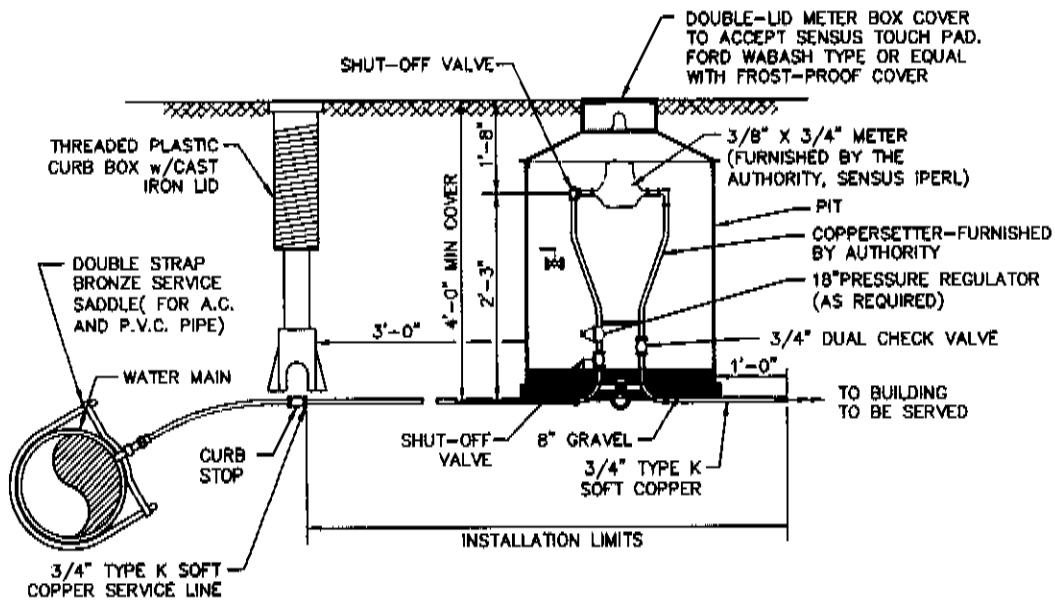
PARENT COUNTY

POUNTSVILLE, PA

SERVICE CONNECTION DETAIL

	BARKSON ENGINEERS, INC. CONSULTING ENGINEERS NEWBOLD, N. 12851	SCALE NONE	DRAWN BY D.L.S.	SHEETS IN SET 1
	SEPT. 2012	DATE SEPT. 2012	APPROVED BY D.W.K.	DRAWING NUMBER 2-314-40-1

METER SIZE	PIT DIAM.	COVER STYLE
5/8"	18"	W2
3/4"	24"	W32 EXTENSION NO. 1
1"	24"	W32 EXTENSION NO. 1



- 1.) METER AND COPPERSETTER - FURNISHED BY AUTHORITY
- 2.) CUSTOMER'S PLUMBER INSTALLS COPPERSETTER AND METER BOX COVER.
- 3.) AUTHORITY INSTALLS METER AND SEAL.
- 4.) PRESSURE REGULATOR INSTALLED BEFORE METER - WITH NO MORE THAN 75lb. PRESSURE MAXIMUM - WHEN PRESSURE REGULATOR IS REQUIRED USE 24" DIA. PIT.
- 5.) WELL SUPPLY MUST BE PHYSICALLY DISCONNECTED OR SEPARATED FROM THE PLUMBING SYSTEM BEFORE THE WATER METER IS INSTALLED.

THE MUNICIPAL AUTHORITY OF THE TOWNSHIP OF WASHINGTON			
FAYETTE COUNTY,		PENNSYLVANIA	
TYPICAL 5/8" TO 1" METER PIT DETAIL			
BE	BANKSON ENGINEERS, INC. CONSULTING ENGINEERS INDIANA, PA 15061	SCALE NONE	DRAWN BY D.P.S.
		DATE SEPT. 2012	APPROVED BY D.W.K.
			SHEETS IN SET 1
			DRAWING NUMBER 2-514-32-1